

---

# Here's an Instant Activity for February 20, 2012



## STRATEGY FOR SPELLING SUCCESS

---

For most learners, spelling well doesn't just happen. It is the result of a conscientious spelling and word-skill curriculum that:

1. provides a menu of skill-building activities that range in sophistication to teach critical concepts at a student's own level,
2. uses assessment to gather information to target word study to the specific words each student has not learned from among all previously introduced words in the program, as well as to identify skills not yet mastered,
3. equips teachers with guidelines for spelling expectations in everyday writing that increase as students develop as writers, making the classroom a rehearsal for real-world writing, *and*
4. proposes multiple opportunities to engage parents in their child's acquisition of spelling skills.

This Instant Activity helps teachers achieve item number 1 above—and item number 4, if the activity is assigned as homework.

Meeting state standards is a priority of Sitton Spelling and Word Skills®. Instant Activities further support skills and concepts reflected in state standards.



## LEVEL OF DIFFICULTY

---

Approximately Grade 5



## PURPOSE

---

To provide practice with *ie/ei* spellings

Skills: spelling, synonyms, word analysis, vocabulary development, writing



## SUGGESTED USE

---

Use this Instant Activity with the Level 5 Sourcebook (2nd or 3rd Edition), Unit 21, Activity 1C, page 182.



## TEACHING DIRECTIONS

---

Select a student to write *eight* on the board. Point out the *ei* spelling of *eight*. Have students brainstorm and sort *ie/ei* words (e.g., *believe*, *belief*, *field*, *shield*, *piece*, *view*, *thief*, *mischievous*, *yield*, *pie*, *friend*, *frontier*, *weird*, *caffeine*, *their*, *either*, *foreign*, *weight*, *neighbor*, *receive*, *beige*, *protein*). Write this rhyme on the board for students to read chorally.

### The Weirdos

All our **f**riends and our **n**eighbors say it's hard to **b**elieve,  
That spelling some words is so hard to **a**chieve!  
Is it **i-e** or **e-i**? Can you **s**eize them **r**elief?  
These **m**ischievous **w**eirdos are the **h**eight of their **g**rief.

Print the Instant Activity and distribute a copy to each student. Discuss the activity to ensure that students know what is expected. Then ask them to complete it at home or at school.



---

#### FOLLOW-UP

---

Review the answers to the Instant Activity. Discuss the meaning of unfamiliar words.

Answers (word that does not belong is noted): 1. foe; 2. weird; 3. agree; 4. seize; 5. obedient; 6. buffer; 7. whole; 8. foreign; 9. expose; 10. deceive; 11. gentle; 12. belief; 13. revolt; 14. unimportant; 15. yield



---

#### FOR MORE INFORMATION

---

For more information about Sitton Spelling and Word Skills®, visit [SittonSpelling.com](http://SittonSpelling.com).

# Build Skills and Word Experiences



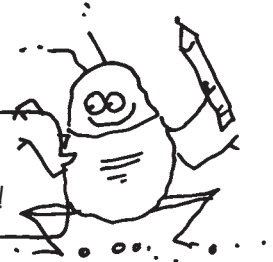
Name \_\_\_\_\_, Super Speller

## Which Doesn't Belong?



Is it ie or is it ei?

From this spelling dilemma we need quick relief!  
These mischievous weirdos are the height of our grief!



First fill in the blanks with the missing letters—ie or ei. Then circle the word in each row that does not belong because of meaning.

- |     |             |             |             |              |
|-----|-------------|-------------|-------------|--------------|
| 1.  | fr__nd      | companion   | foe         | ally         |
| 2.  | w__rd       | usual       | typical     | normal       |
| 3.  | ach__ve     | agree       | accomplish  | attain       |
| 4.  | s__ze       | refuse      | decline     | reject       |
| 5.  | misch__vous | naughty     | disobedient | obedient     |
| 6.  | v__w        | scene       | vista       | buffer       |
| 7.  | p__ce       | segment     | whole       | portion      |
| 8.  | for__gn     | familiar    | known       | recognizable |
| 9.  | sh__ld      | protect     | shelter     | expose       |
| 10. | dec__ve     | depart      | exit        | withdraw     |
| 11. | f__rce      | gentle      | ferocious   | violent      |
| 12. | bel__f      | doubt       | uncertainty | reservation  |
| 13. | r__gn       | rule        | govern      | revolt       |
| 14. | ch__f       | unimportant | primary     | principal    |
| 15. | y__ld       | resist      | endure      | withstand    |



Find and write at least one synonym for each word you circled above.