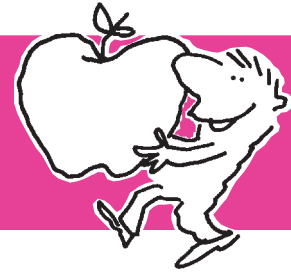


Here's an Instant Activity for January 17, 2011



STRATEGY FOR SPELLING SUCCESS

For most learners, spelling well doesn't just happen. It is the result of a conscientious spelling and word-skill curriculum that:

1. provides a menu of skill-building activities that range in sophistication to teach critical concepts at a student's own level,
2. uses assessment to gather information to target word study to the specific words each student has not learned from among all previously introduced words in the program, as well as to identify skills not yet mastered,
3. equips teachers with guidelines for spelling expectations in everyday writing that increase as students develop as writers, making the classroom a rehearsal for real-world writing, *and*
4. proposes multiple opportunities to engage parents in their child's acquisition of spelling skills.

This Instant Activity helps teachers achieve item number 1 above, as well as item number 4, if the activity is assigned as homework.

Meeting state standards is a priority of Sitton Spelling and Word Skills®. Instant Activities further support skills and concepts reflected in state standards.



LEVEL OF DIFFICULTY

Approximately Grade 3



PURPOSE

To provide practice with /j/ and /s/ spelling patterns

Skills: spelling, phonics, spelling word patterns, word analysis, vocabulary development, writing



SUGGESTED USE

Use this Instant Activity with the Level 3 Sourcebook (2nd or 3rd Edition), Unit 19, Activity 2A, page 182.



TEACHING DIRECTIONS

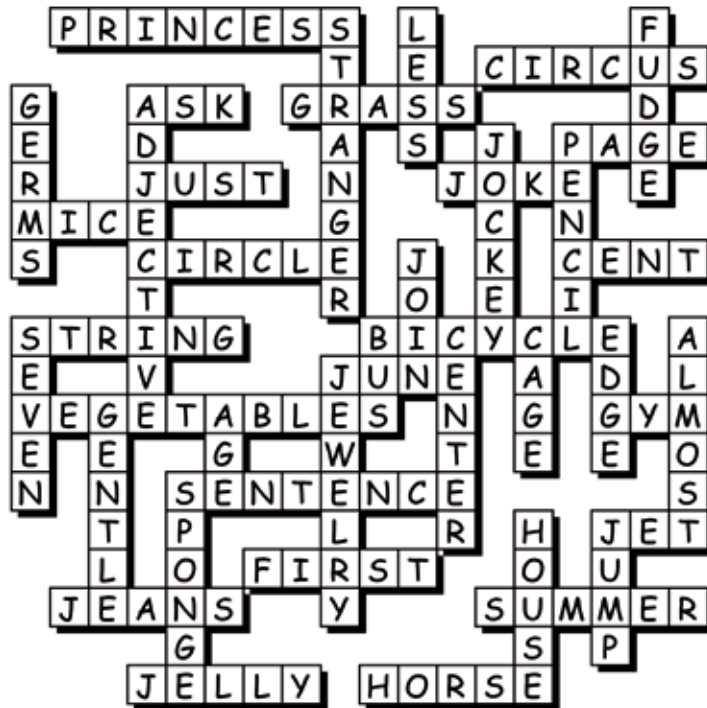
Select students to write these words on the board: *just, change, giant, gym*. Ask students how these words are alike (/j/). Identify the letters spelling /j/ (*j, ge, gi, gy*). Conclude that /j/ can be spelled with *j*, but also with *g*—with the help of *e, i, or y*. Then select students to write these words on the board: *sun, miss, place, city, bicycle*. Ask students how these words are alike (/s/). Identify the letters spelling /s/ (*s, ss, ce, ci, cy*). Conclude that /s/ can be spelled with *s* or *ss*, but also with *c*—with the help of *e, i, or y*.

Print the Instant Activity and distribute a copy to each student. Discuss the activity to ensure that students know what is expected. Then ask them to complete it at home or at school.



FOLLOW-UP

Review the answers to the Instant Activity. Discuss the meaning of unfamiliar words.



FOR MORE INFORMATION



For more information about Sitton Spelling and Word Skills®, visit SittonSpelling.com.

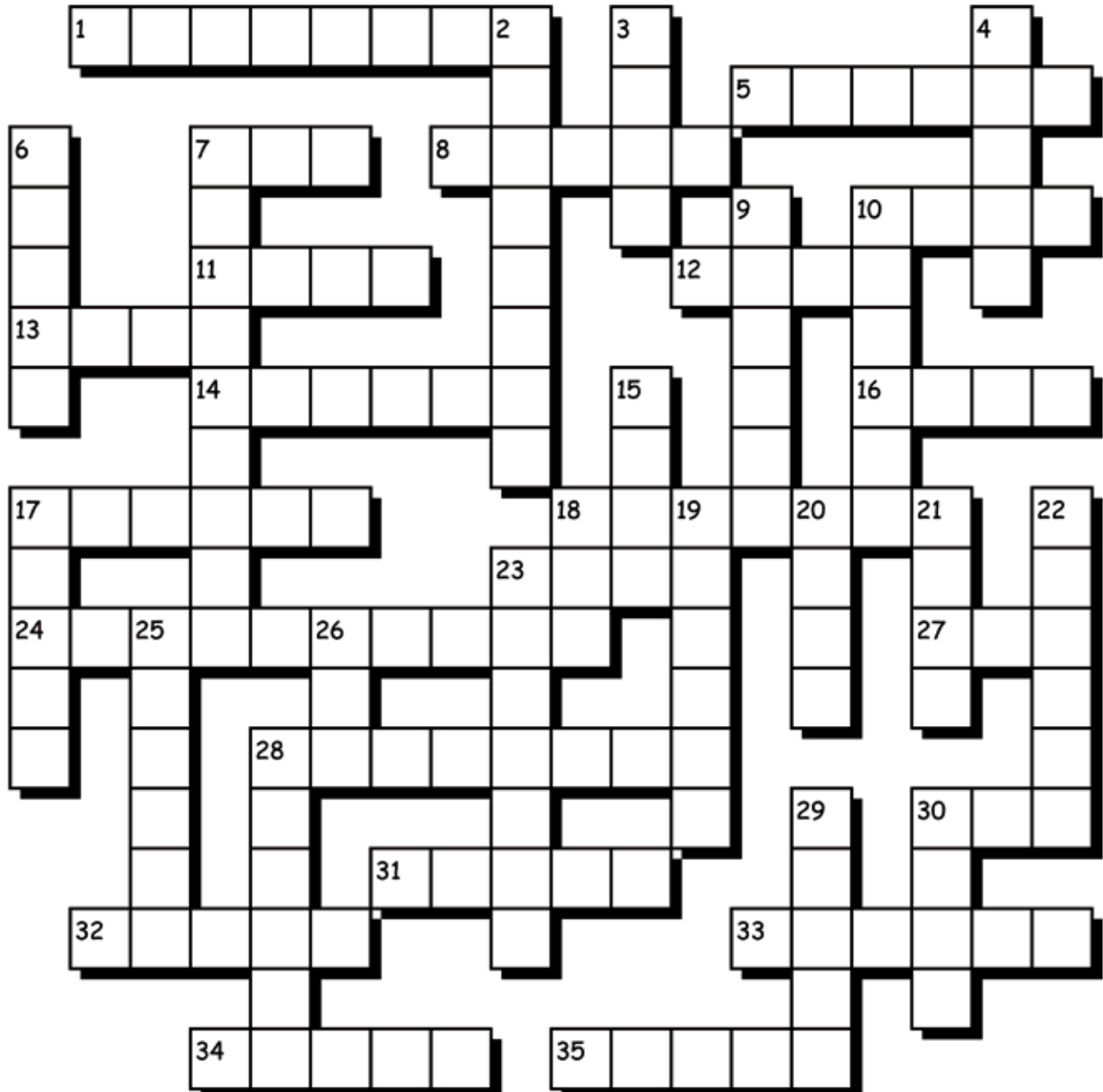
Build Skills and Word Experiences



Name _____, Super Speller

Crossword Fun

Use the clues on the next page to solve the puzzle. All answer words contain the sound you hear at the beginning of  or the sound you hear at the beginning of .



Sort these words by ending letters—*ge* or *dge*. Then listen to the vowel sound in each word. Explain in writing what you discover.

age • edge • judge • huge • page • bridge • lodge • stage

Build Skills and Word Experiences



Crossword Puzzle Clues

ACROSS

1. opposite of prince
5. see clowns perform at this; usually in a tent
7. to pose a question
8. it's green and it has to be mowed
10. part of a book, turn each one after reading
11. two meanings: only or fair
12. something you tell to make people laugh; knock-knocks are one kind
13. plural of mouse
14. not a square, but a ____; it's round
16. one penny
17. need this to stay connected to your kite
18. has two wheels and two pedals
23. the month before July
24. corn, peas, spinach, broccoli
27. large room where volleyball and other games are played
28. usually ends with a period
30. a fast airplane
31. opposite of last
32. denim pants
33. It comes between spring and fall.
34. kind of like jam
35. an animal you can ride; it wears shoes

DOWN

2. someone you don't know
3. opposite of more
4. chocolate candy, usually cut into small squares
6. we wash our hands to get rid of these
7. a word that describes
9. person who rides a race horse
10. You write with this. It usually has an eraser.
15. become a member
17. in between six and eight
18. You might take this to get to school. It's often yellow.
19. middle
20. You might keep your pet bird in one of these.
21. not in the middle, way out on the ____
22. nearly
23. necklaces, earrings, bracelets
25. opposite of rough or harsh
26. How old you are is your ____.
28. soaks up water; use it to wash dishes
29. home, dwelling, abode
30. leap, hop, spring